

DVB-T Mini TV Stick T119

Quick Installation Guild

Chapter 1 Overview

1.1 Introduction

Important Notice: "All channels are subject to coverage and may be changed from time to time. Reception may depend on the type and condition of your existing aerial. Aerial upgrade may be required. Please confirm coverage in your area." We strongly recommend that you install an outdoors antenna when you use the DTV receiver indoors.

Note:

- 1. Terrestrial digital wireless broadcast signal may be affected by topography, objects and weather. This would cause a poor signal quality. Therefore, we strongly suggest you to use a rooftop antenna when received indoors.**
 - 2. This product is moveable but not be suitable of using in a high speed moving environment. Please check other associated products for these requirements.**
 - 3. When you use the function of pre-recording, real time recording, or time shifting, please make sure you have enough hard disk space to save huge recording data.**
 - 4. In order to operate properly, please follow the user manual and suggestive setup. Improper operations may cause the system unstable or crash. Before you remove hard disk devices, please check other related application has been closed.**
- We reserves the right to add or delete the application and its functions; all new release drivers and application will be mentioned in our website. We are not responsible for further notice.**

1.2 System Requirements

Recommended OS system (Watching TV and recording)

- 1.7 GHz CPU
- 256 MB RAM (minimum), 512 MB RAM recommended
- Sound card for audio
- One free USB2.0 interface
- CD-ROM (install driver & application)
- Windows 7/Vista/XP

1.3 Package Contents

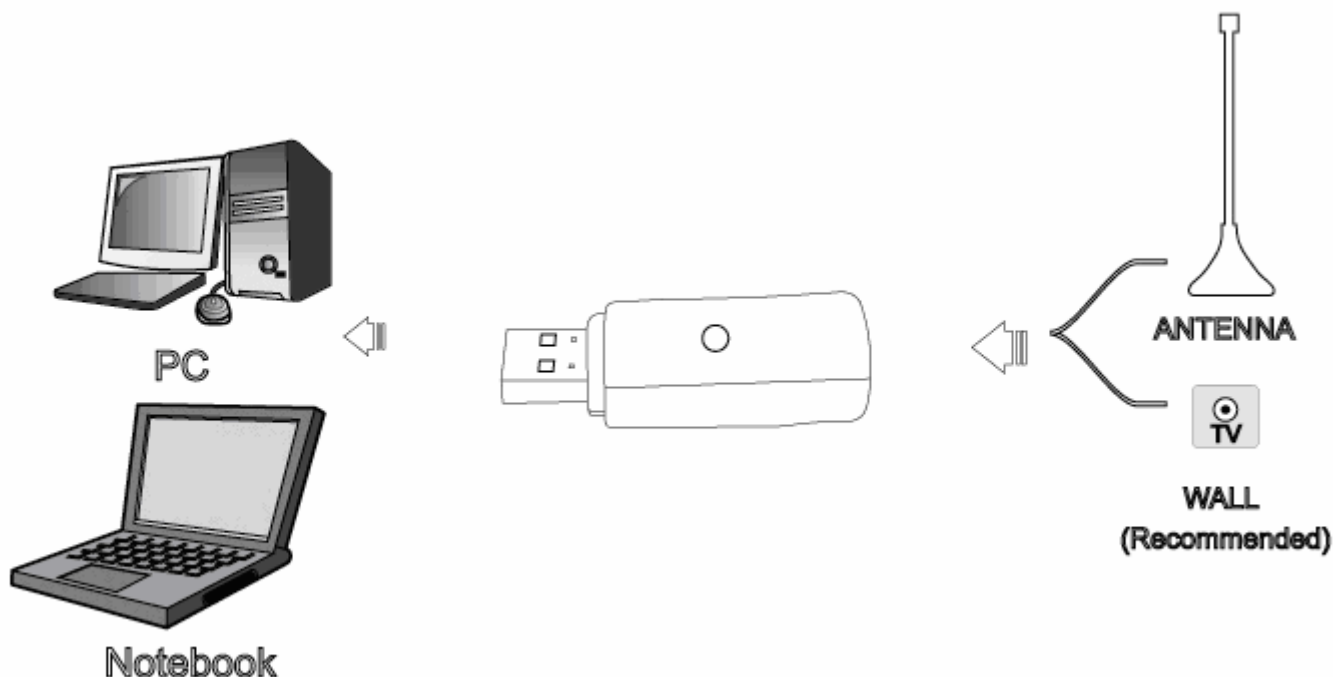
DVB-T DVB-T Mini TV stickx1

Quick Installation Guide x1

DVB-T Antenna (Optional) x1

Software CD (Driver and Application Software)

Chapter 2 Hardware Connection



Step1. Plug the portable antenna to DVB-T Mini TV Stick

Step2. Plug the DVB-T Mini TV Stick to USB port of your laptop/PC

Chapter 3 How to install driver and software

3.1 Driver Installation:

Step1: OS will remind a new hardware-- "**New Hardware Device**" was found. Please choose "**Cancel**",

Step2: When CD is inserted, OS will guide you to the setup automatically. Click "**Driver Install**" or run **Drivers\ Setup.exe**,

Step3: Click "**Next**" to continue installation

Step4: OS will promote to install devices, Click "**Continue Anyway**"

Step5: Click "**Finish**" to completely install the Driver Software.

3.2 Software installation

Step6: Click "**Sftware Install**".

Step7: Installation of Total Media, Choose setup language

Step8: Click "**Next**" to continue installation

Step9: Click "**Yes**" and then it will install "**Arcsoft TotalMedia**"

Step10: If you want to change the destination folder, please click "**Browse**" and click "**next**" (Recommended is better)

Step11: Please click "**Next**"

Step12: Program starts to copy files.

Step13: Click "**Finish**", the Arcsoft TotalMedia software is installed on your computer.

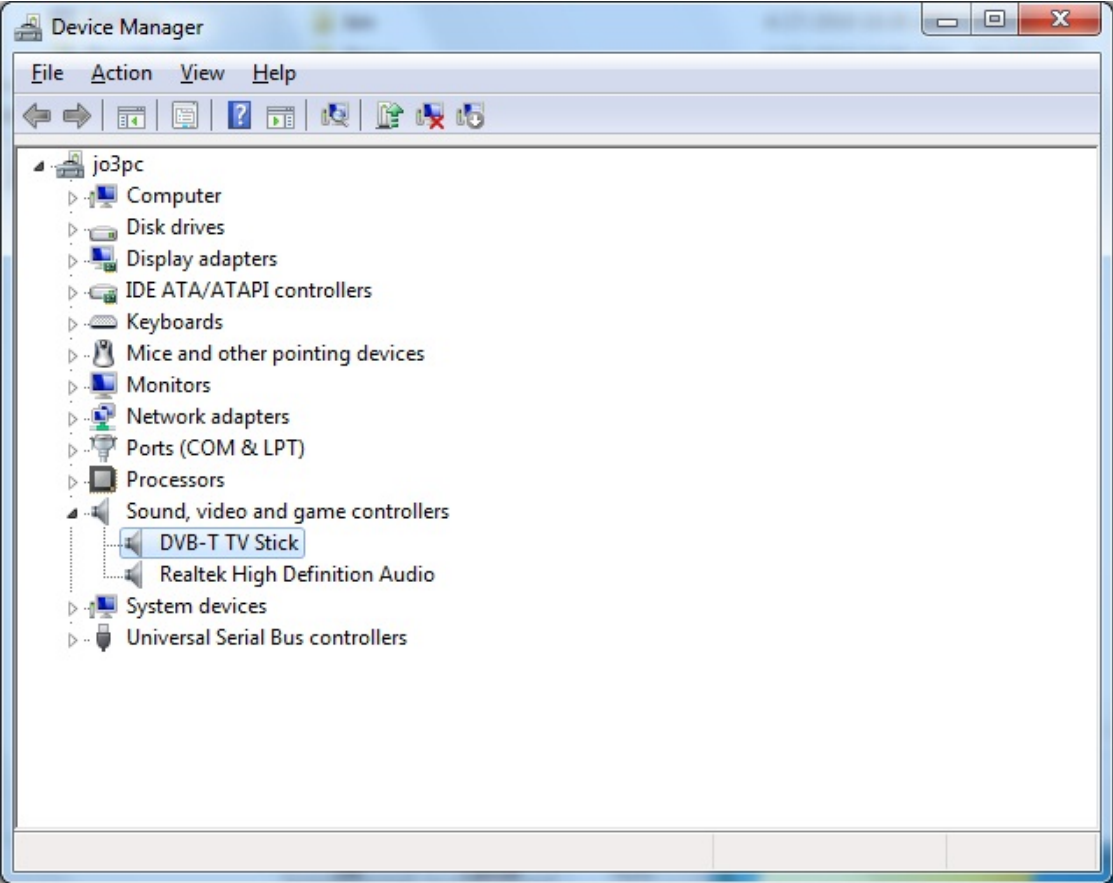
Step14: You will see that DVB-T application icons will appear on your desktop.



TotalMedia 3.5

Step15: When its finished, please check on Control panel, select “**System**”—“**System properties**”—“**Device Manager**”, you can see one devices which new driver is installed.

DVB-T TV Stick




Note: After finishing the installation and it did not appear on your Device Manager, please try to re-install the software,

Step16: Arcsoft Total Media

For more information about TotalMedia, please click “?” on the menu bar for help or visit their website at www.arcsoft.com.

Chapter 4 How to use Remote Control

4.1 Remote Control Button List definition

	1	Mute: On/off volume mute
	2	Shuffle: 16 channel preview
	3	Full Screen/ Restore: Switches from full screen to the default screen
	4	Total Media: Open /Close Total Media Software
	5	0-9:Channel Number Keys
	6	ESC: Return
	7	Snapshot: Takes a picture of what is on screen
	8	Up/ Down/ Left/ Right/ OK Snapshot: Takes a picture of what is on screen
	9	CH+/CH-: Channel Up/Channel Down VOL-/VOL+: Volume Down/Volume UP
	10	Record: Record/Stop recording the current program Stop: Stops pre-recorded viewing and returns to live TV Time-Shift: Deferred reproduction

Chapter 5 Frequency Ask Question (FAQ)

1. Can not lock any program channel when auto scan.

1. Please check if there is DVB-T broad casting program in your area;
2. Please check if your signal condition is too weak, try to move the antenna around and re-scan again, it is better to move the antenna near the window
3. Please check you connect the antenna and tightly
4. Please check you select right country in the Total Media software scan function page.
5. Please try to use an outdoor antenna and scan once more.

2. I do find some channels,, but this time I get fewer channels than last time

1. Maybe you moved antenna's position or angle, try to find the better position and keep the antenna vertical
2. The weather also can also affect your receiving signal quality, if the weather is bad today, that is the reason
3. In some new start DVB-T broadcasting area, the provider of DVB-T broadcasting, may change their broadcasting power from day to day, try to find a best power strength.
4. If you put a CAN of cola on the antenna, that will make signal weak, please move them away.

3. When I watch program, Screen blacked out when playing or freezes on first picture.

Unfortunately, you are in a weak signal condition. You can see that from the Yellow light on the top of DVB-T TV STICK. The reason is same as question 2.

4. Video playing but Audio failed

Please check the sound card or the volume setting.

5. Remote control does not work

1. Check remote control batteries.
2. Check remote receiver: the light will be on when receive, that is showing it is getting signal.
3. Check if you are in 5m between the DVB-T TV Stick don't keep to far away.
4. Please point the receive window, that is to say, the angle of the receiving and sending is important

6. Watching TV some time freeze or slow, also audio stroke

1. Please check your PC is not Pentium 3 or 2, DVB-T TV STICK need a high CPU to decoding DVB-T stream
2. Please check you VGA driver is properly installed and updated
3. Please don't run another high CPU loading software such as game and CAD.